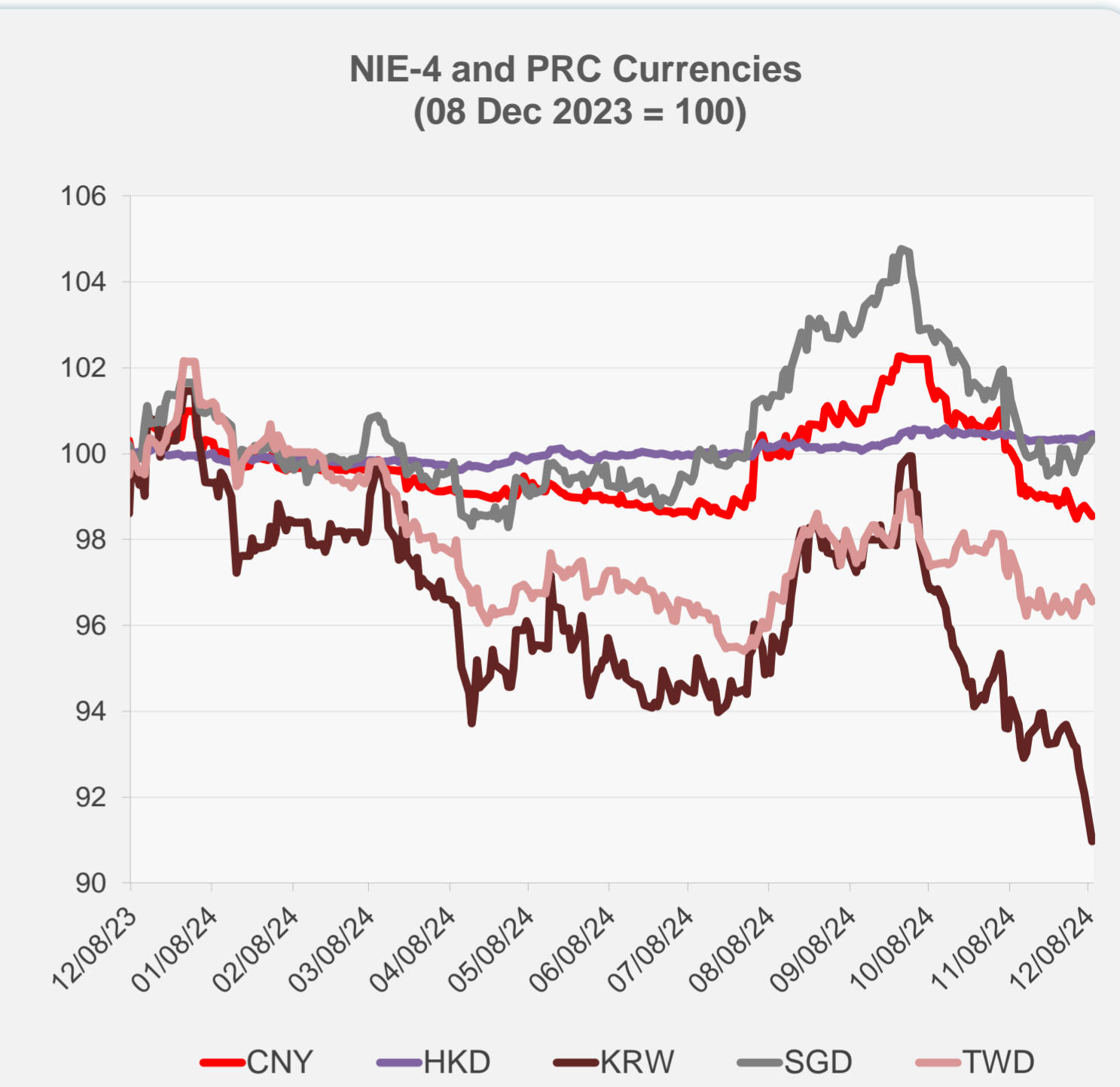
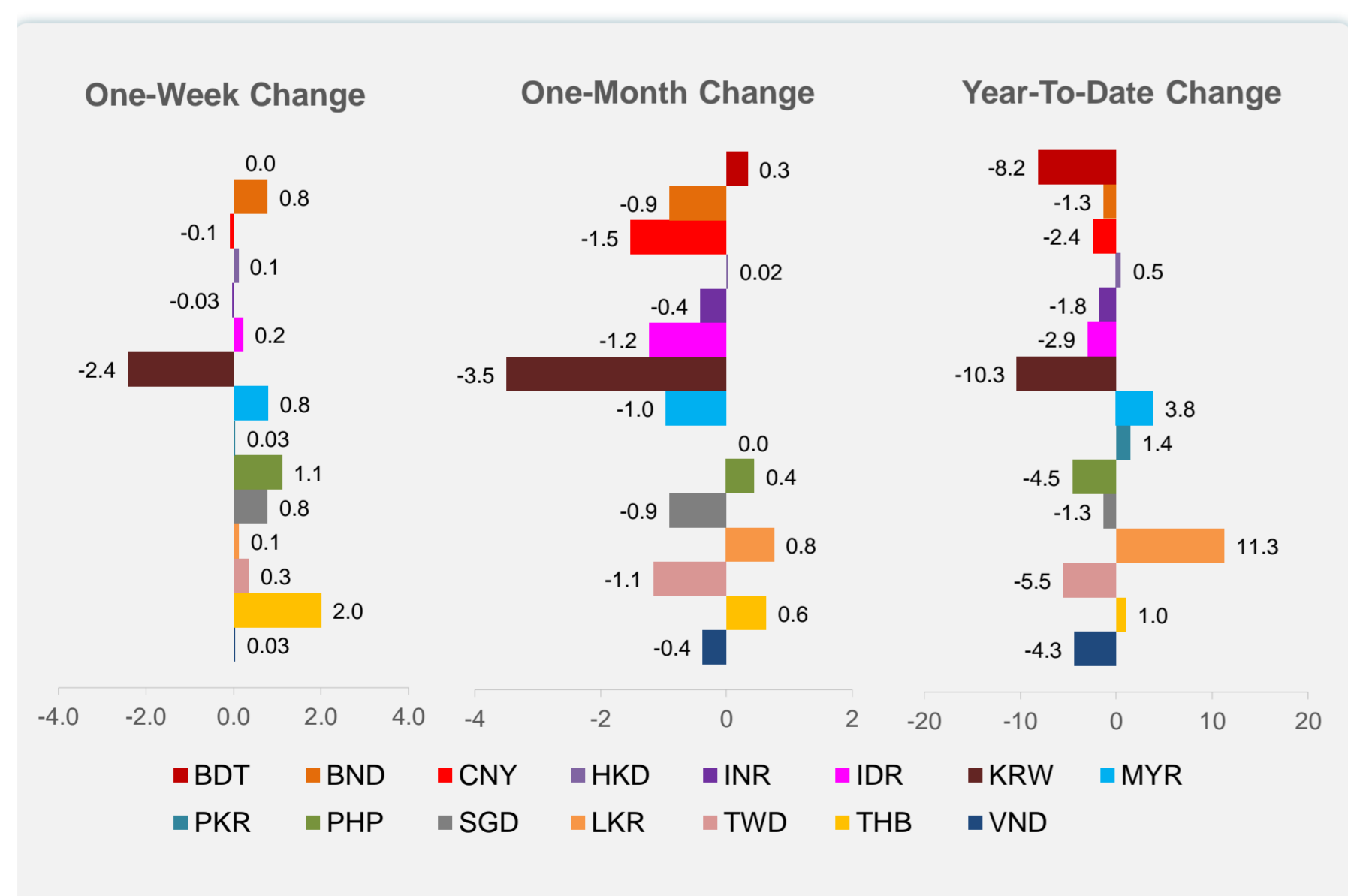
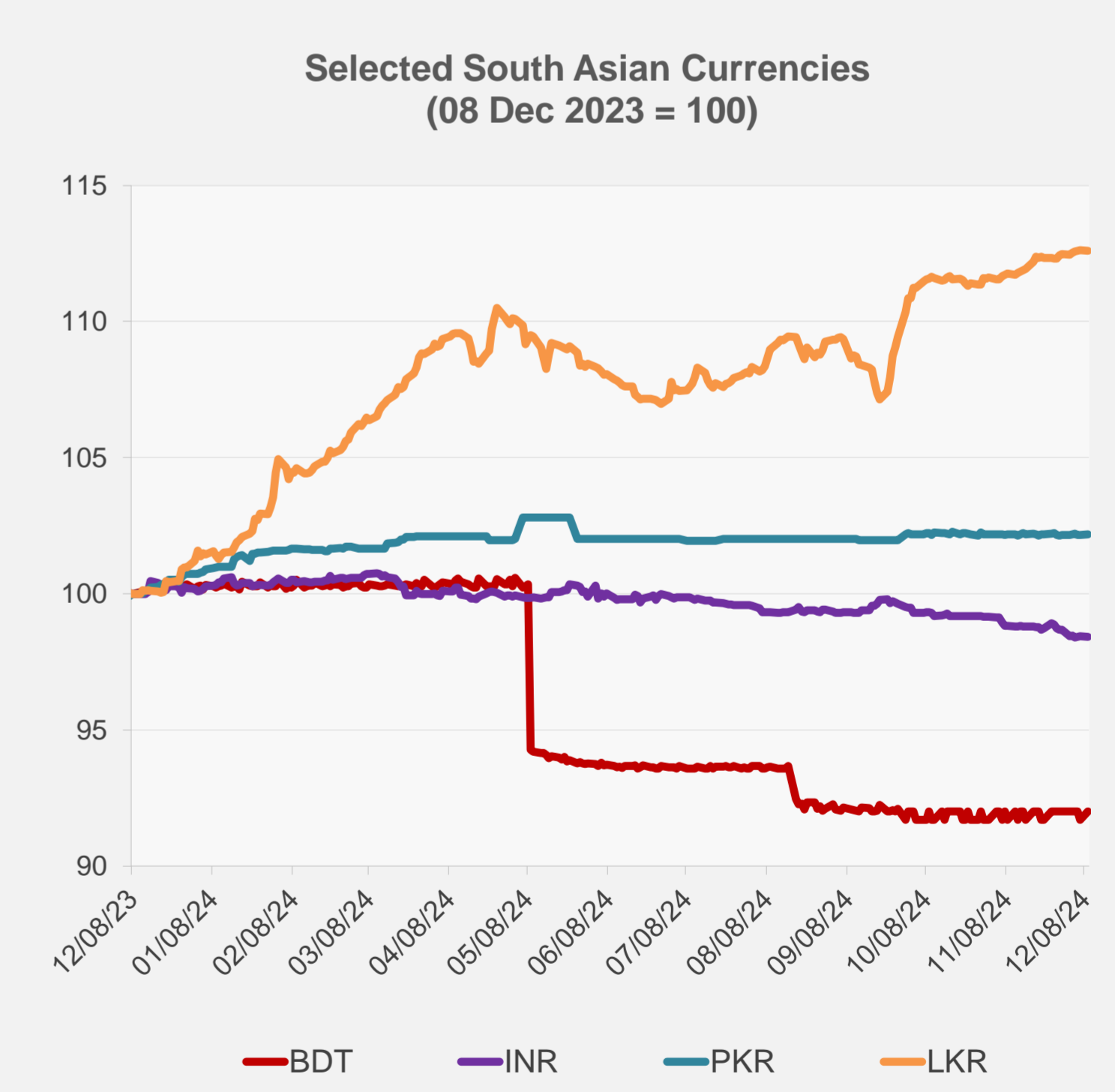
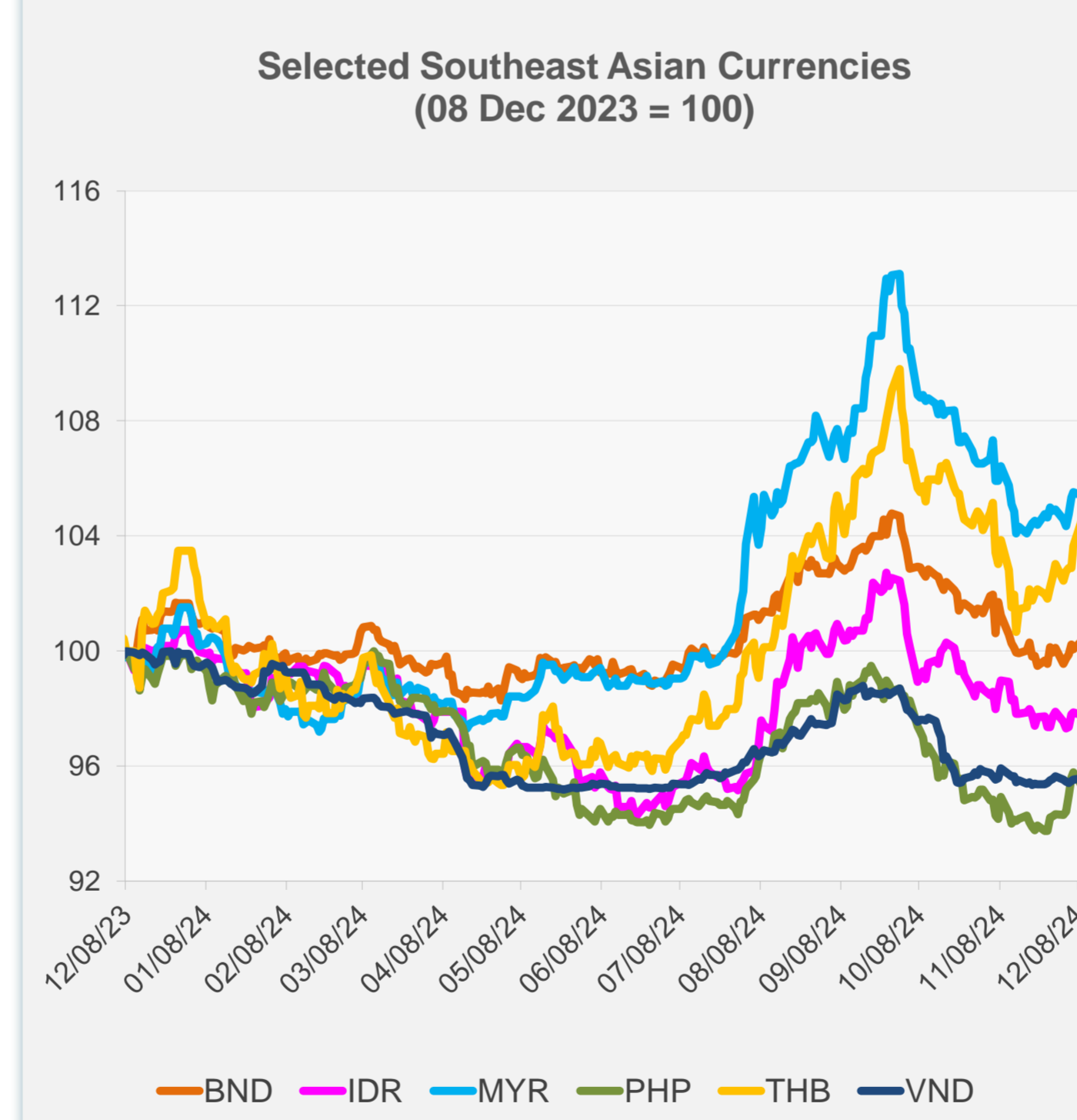


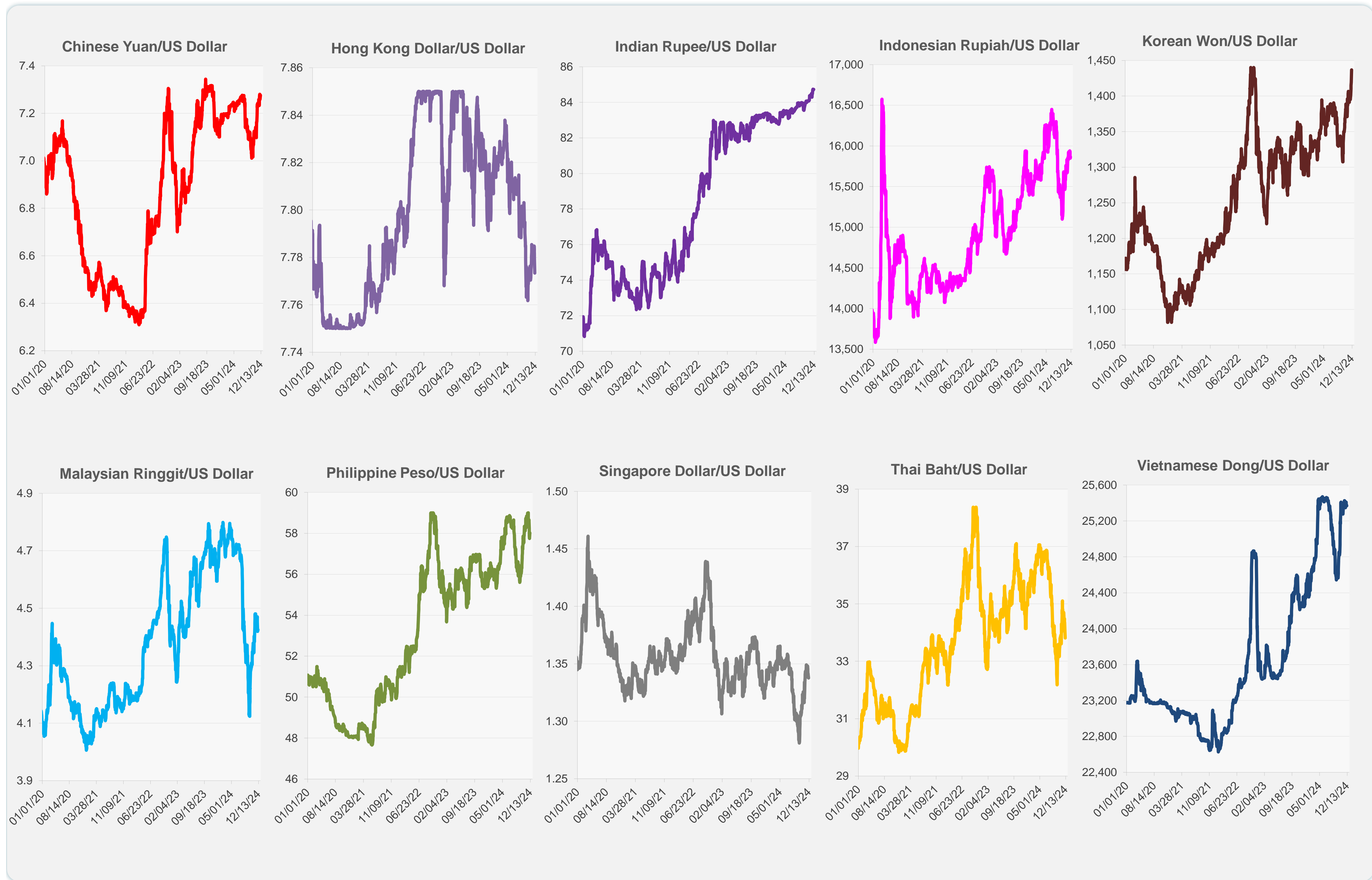
	Latest Closing	% change from Previous Day	% change from 01-Jan-24
Euro	0.94	0.28	-4.10
Japanese yen (JPY)	151.03	-0.75	-6.71
Bangladeshi taka (BDT)	119.50	0.33	-8.16
Brunei dollar (BND)	1.34	0.28	-1.29
Chinese yuan (CNY)	7.28	-0.24	-2.42
Hong Kong dollar (HKD)	7.77	0.09	0.49
Indian rupee (INR)	84.73	-0.04	-1.76
Indonesian rupiah (IDR)	15,865.00	-0.09	-2.95
Korean won (KRW)	1,436.80	-1.22	-10.35
Malaysian ringgit (MYR)	4.43	-0.12	3.82
Pakistan rupee (PKR)	277.83	0.04	1.44
Philippine peso (PHP)	58.02	-0.47	-4.53
Singapore dollar (SGD)	1.34	0.28	-1.29
Sri Lanka rupee (LKR)	290.28	-0.02	11.26
Taipei,China NT dollar (TWD)	32.49	-0.34	-5.47
Thai baht (THB)	33.81	0.82	0.98
Vietnamese dong (VND)	25,369.00	0.05	-4.34



NIE = Newly Industrialized Economies



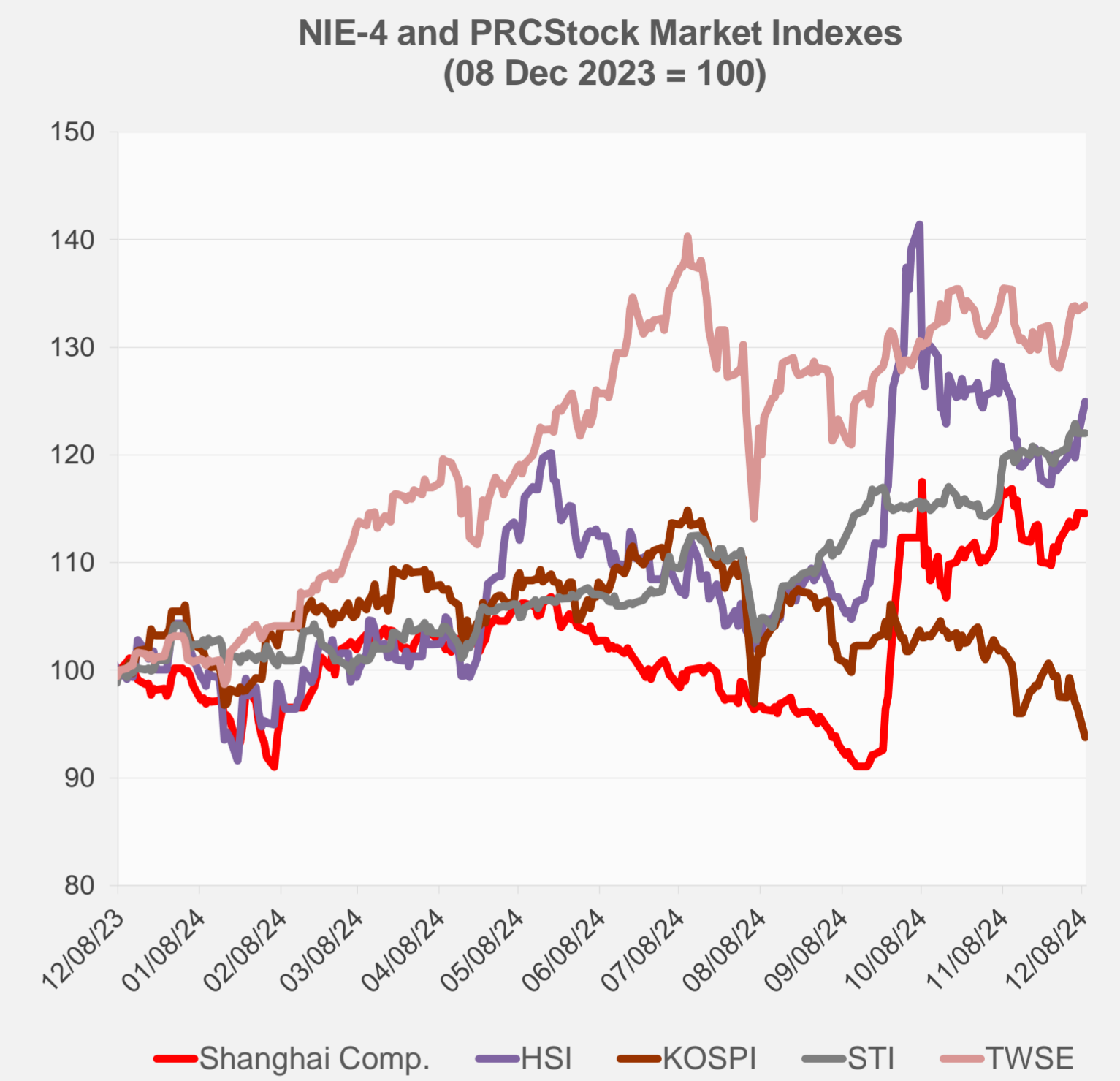
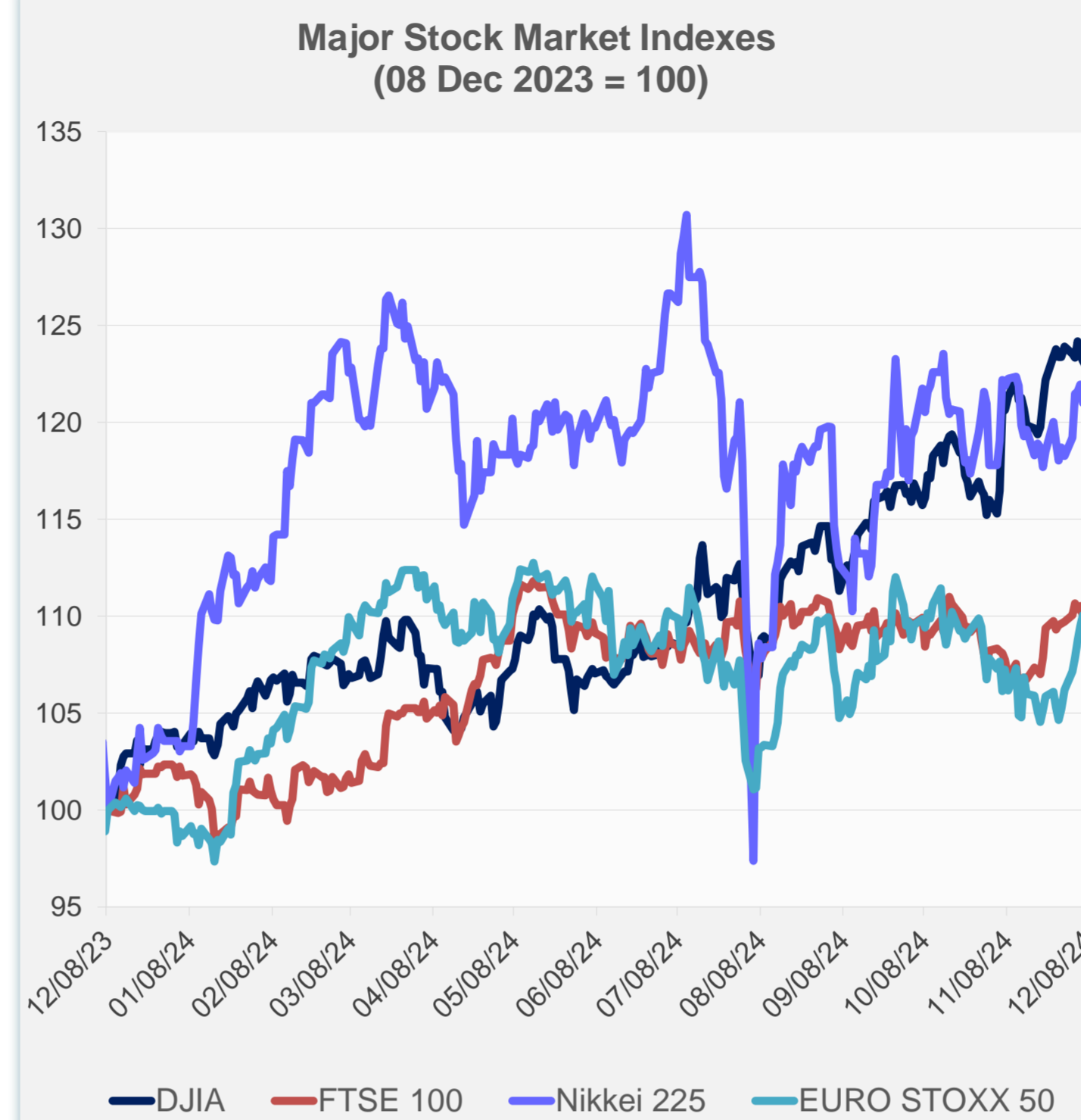
Note: Negative/Decreasing values indicate depreciation of local currency, and positive/increasing values indicate appreciation.
Source: ADB calculations using data from Haver Analytics.



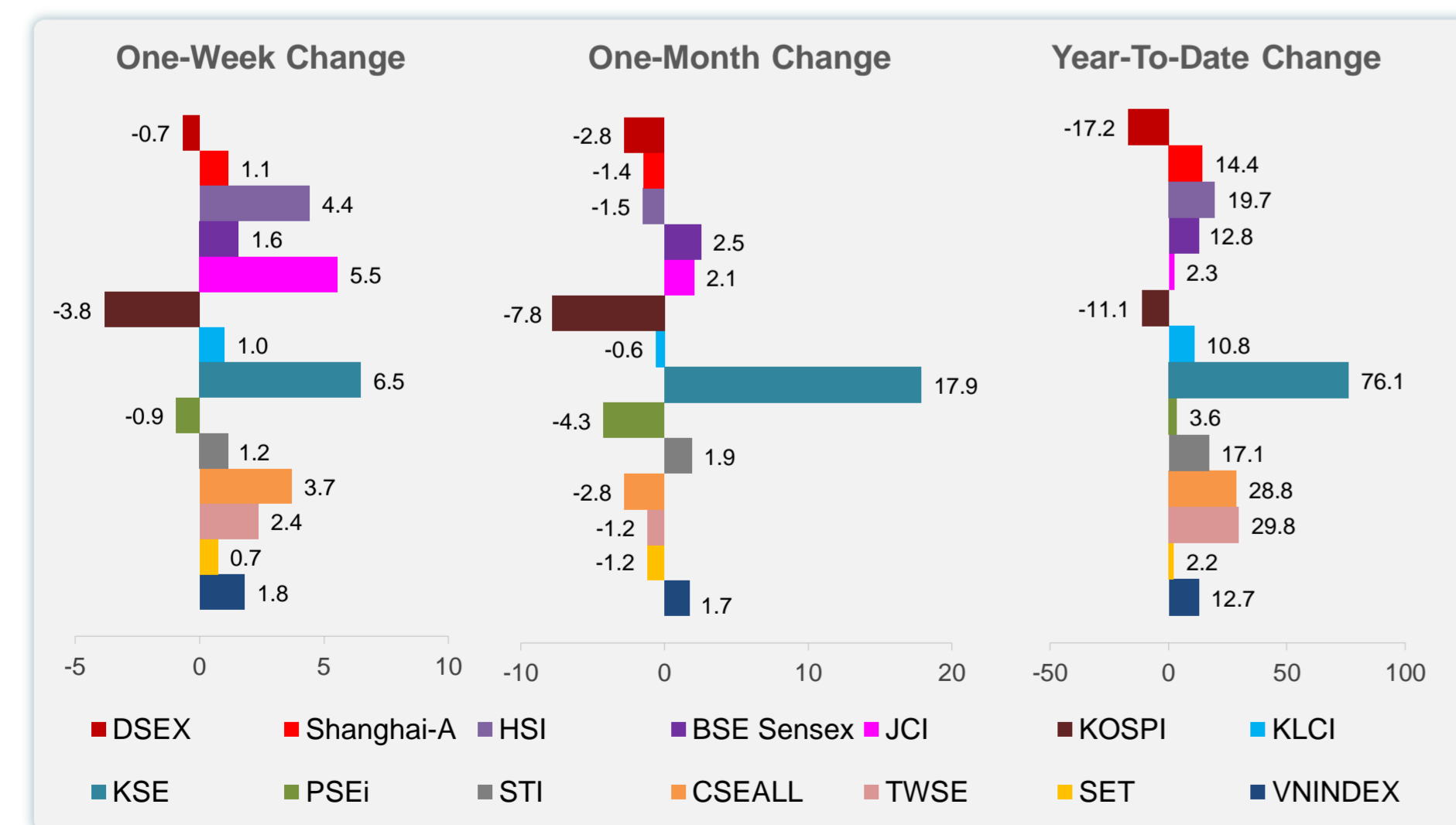
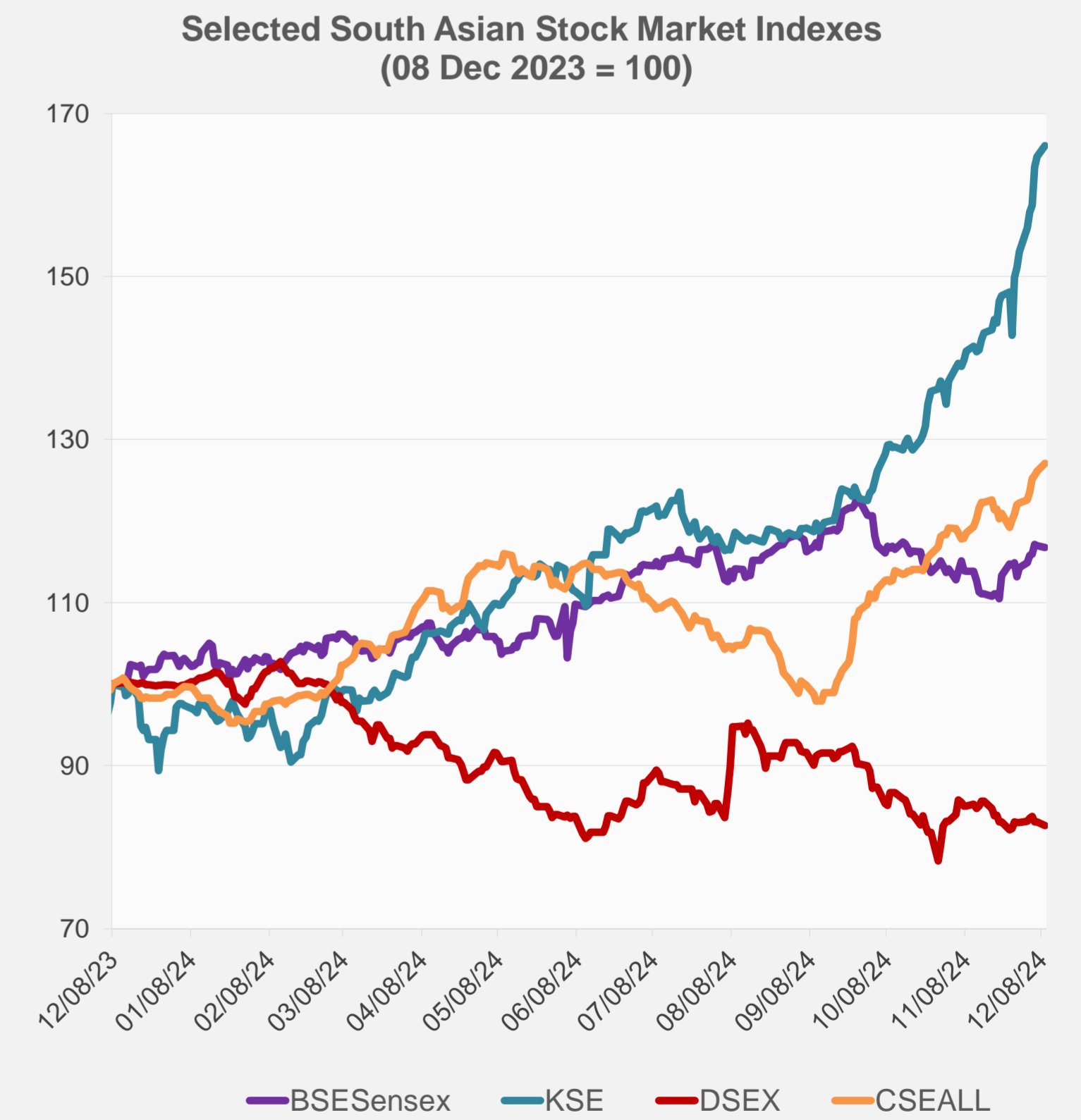
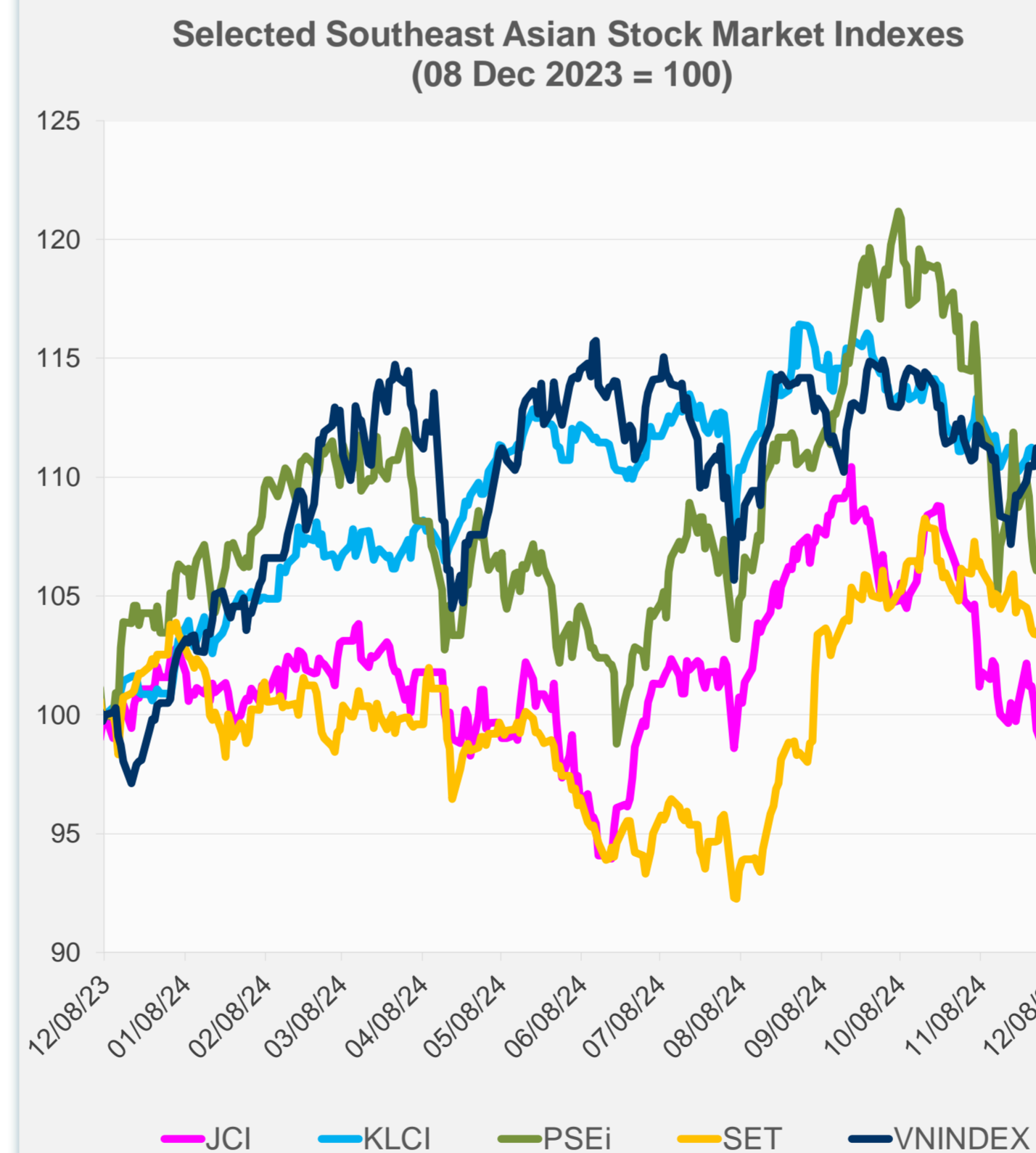
Source: Haver Analytics.

Daily Market Watch STOCK INDEXES

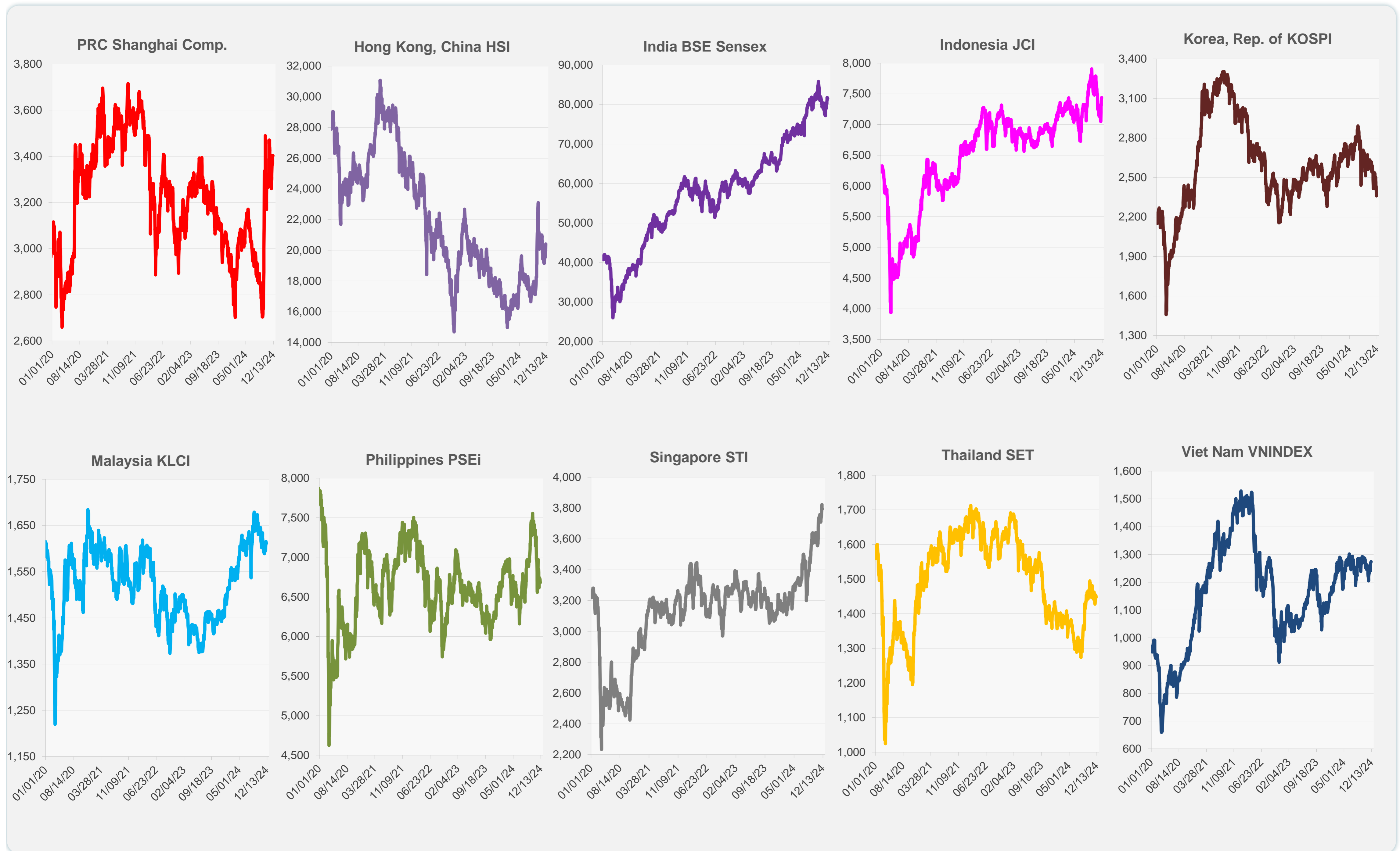
	Latest Closing	% change from Previous Day	% change from 01-Jan-24
US Dow Jones Ind Avg	44,401.93	-0.54	17.81
US NASDAQ	19,736.69	-0.62	31.48
US S&P 500	6,052.85	-0.61	26.90
UK FTSE 100	8,352.08	0.52	8.00
EURO STOXX 50	4,985.46	0.15	10.26
Japan NIKKEI 225	39,160.50	0.18	17.02
Bangladesh DSEX	5,166.98	-0.57	-17.23
PRC Shanghai Comp.	3,402.53	-0.05	14.37
Hong Kong, China HSI	20,414.09	2.76	19.75
India BSE Sensex	81,508.46	-0.25	12.78
Indonesia JCI	7,437.73	0.74	2.27
Korea, Rep. of KOSPI	2,360.58	-2.78	-11.10
Malaysia KLCI	1,611.43	-0.11	10.78
Pakistan KSE 100	109,970.38	0.84	76.09
Philippines PSEi	6,680.57	-0.72	3.57
Singapore STI	3,794.92	-0.03	17.12
Sri Lanka CSEALL	13,718.75	0.77	28.76
Taipei, China TWSE	23,273.25	0.34	29.79
Thailand SET	1,447.53	-0.31	2.24
Viet Nam VNINDEX	1,273.84	0.29	12.74



NIE = Newly Industrialized Economies



Sources: ADB calculations using data from CEIC Data Company and Haver Analytics.



Sources: CEIC Data Company and Haver Analytics.

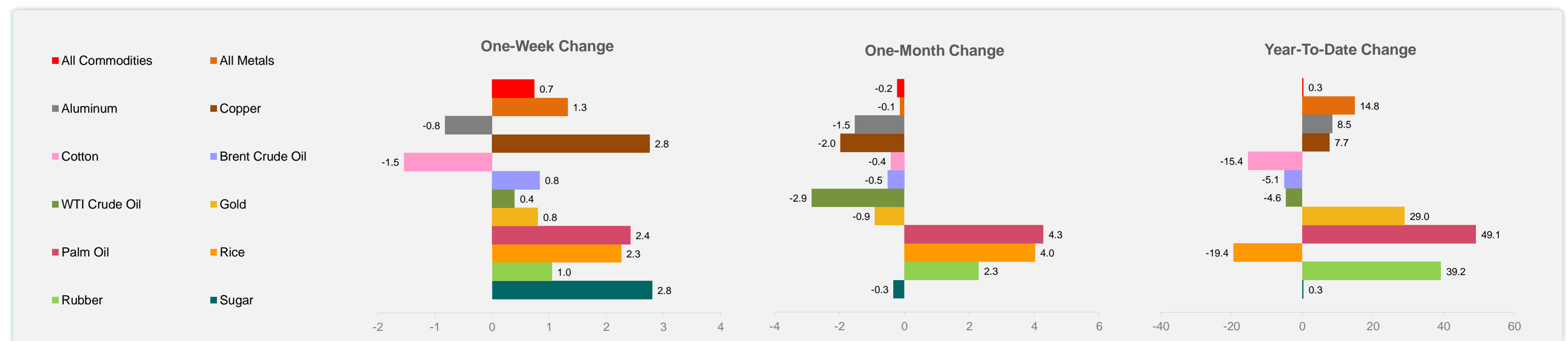
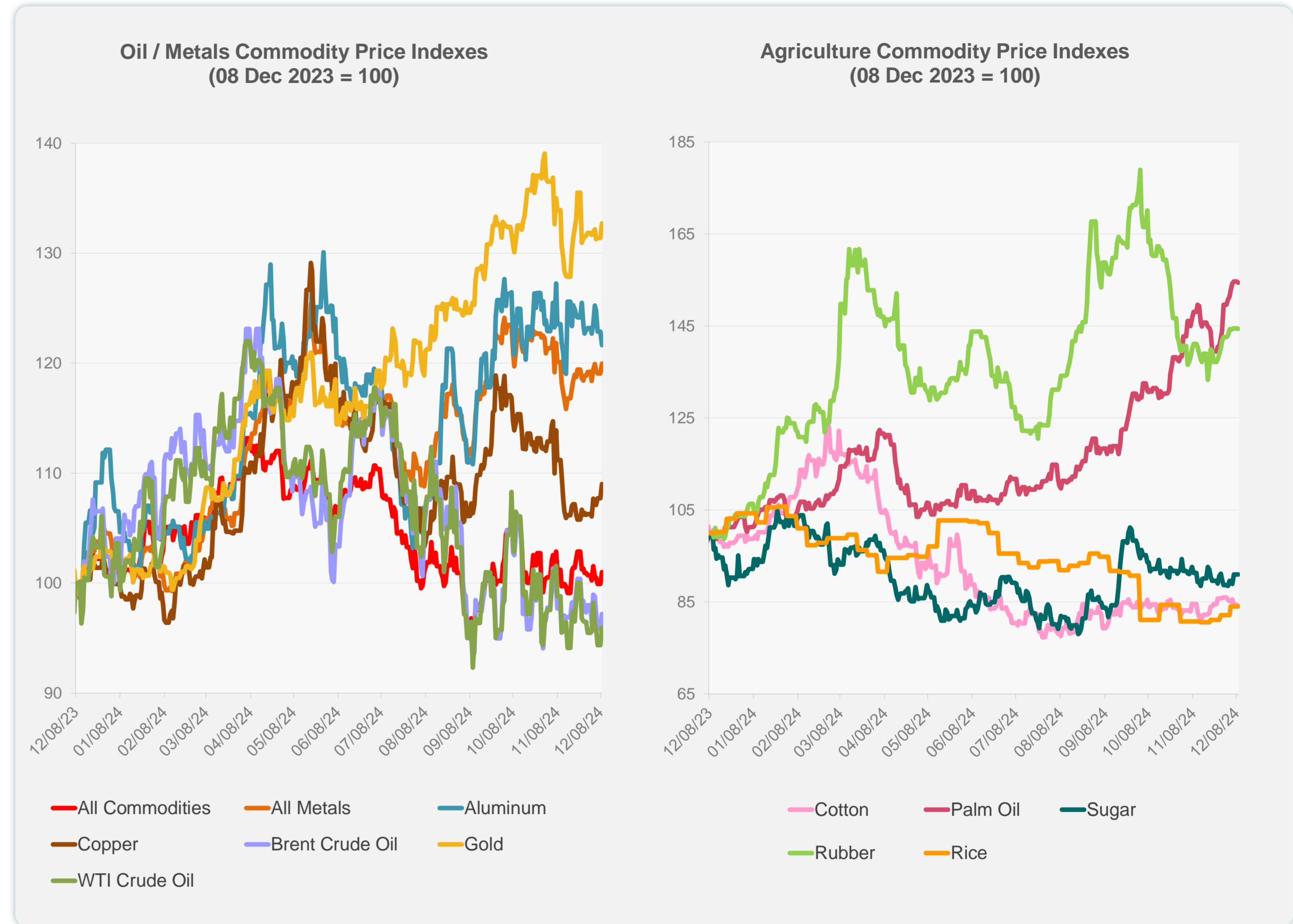
Daily Market Watch
COMMODITY PRICES

10 December 2024, 9:00 AM Manila

	Unit	Latest Closing	% change from Previous Day	% change from 01-Jan-24
S&P All Commodities	US\$	537.23	1.08	0.30
S&P All Metals	US\$	318.46	0.75	14.79
Aluminum	US\$/metric ton	2,544.61	-0.98	8.49
Copper	US\$/metric ton	9,118.98	1.19	7.74
Cotton	US cents/lb	66.45	-0.24	-15.35
Brent Crude Oil	US\$/barrel	73.67	1.44	-5.06
WTI Crude Oil	US\$/barrel	68.37	1.74	-4.58
Gold	US\$/troy oz	2,660.30	1.02	28.95
Palm Oil	US\$/metric tonne	1,206.48	-0.16	49.13
Rice ¹	US\$/metric ton	543.00	0.00	-19.44
Rubber ²	US\$/kg	241.00	-0.04	39.23
Sugar	US cents/lb	20.54	0.00	0.34

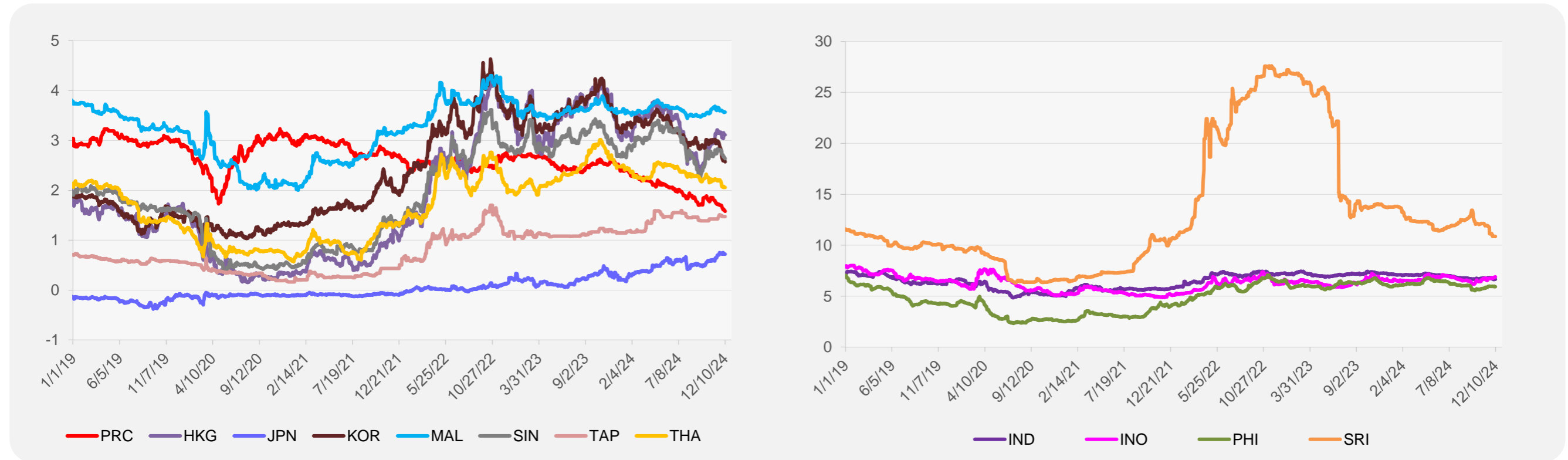
¹ Latest closing price from 4 December 2024.

² Singapore Exchange, Ribbed Smoked Sheet Rubber.

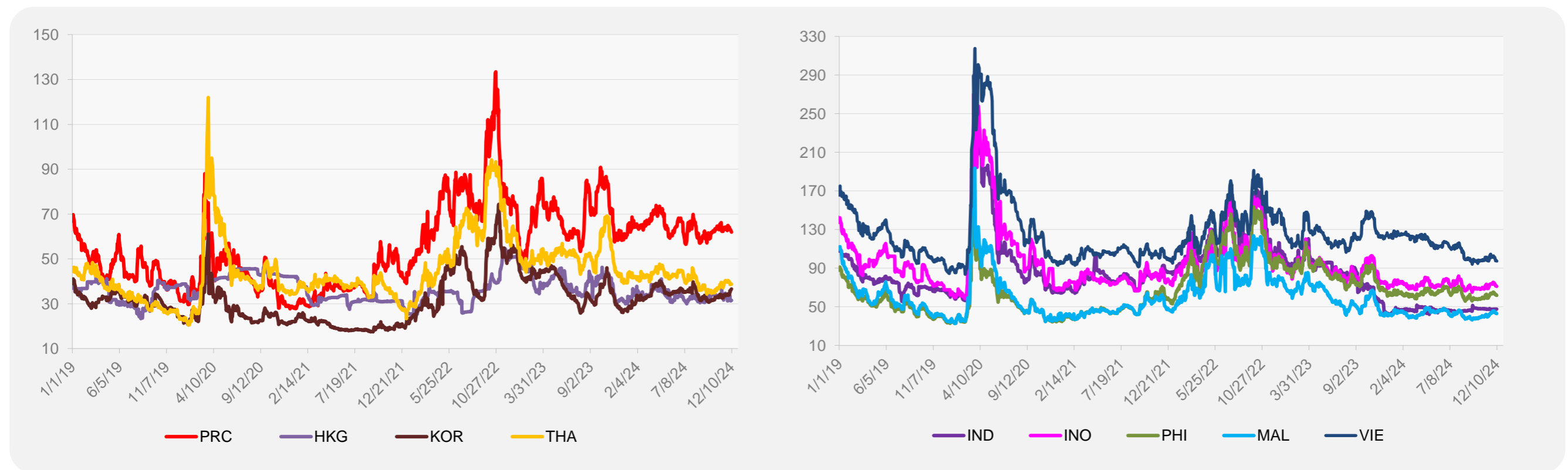


Source: ADB calculations using data from Bloomberg.

5-YEAR LOCAL CURRENCY GOVERNMENT BOND YIELDS (%)



5-YEAR CREDIT DEFAULT SWAP¹



¹ In USD and based on sovereign bonds.
Source: ADB calculations using data from Bloomberg.